

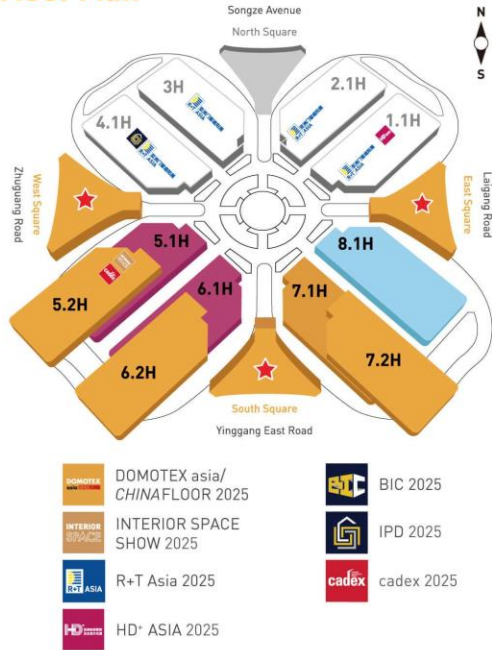
<https://istheonlywayjesusc.wixsite.com/love>  
<https://youtube.com/shorts/DXvkYsst7zE?feature=shared>  
<https://istheonlywayjesusc.wixsite.com/captain-paul-eliya>  
<https://istheonlywayjesusc.wixsite.com/hero>

# RECEIPT AHC

HELP LINE 051-111-130-786

Regn No		Date	21/02/25	Applied By	Self, W/O, S/O, D/O, F/O, M/O or Rep
Army No		Rank		Name	Paul Aliya
Subject	Threats on Imitz Thana		Concerned Section	Co AS	Dte
Contact no for progress	مزید معلومات کیلئے رابطہ نمبر				
Received By	Rank	Civil Offr	Name	Wajidi Rahim	Signature

## Floor Plan



**Hongqiao International Airport / Hongqiao Railway Station:**  
Take Metro Line 2 and get off at National Exhibition and Convention Center Station (Exit 5).

**Pudong International Airport:**  
Maglev to Longyang Road Station or take Metro Line 2 to National Exhibition and Convention Center station (Exit 5).

**DOMOTEX asia/CHINA FLOOR**  
26-28 May, 2025 | Shanghai-China

Visitor Badge



DACF0005545KAX

Visitor

**PAUL ELIYA**

IONIC THRUST  
F-16 FIGHTER PILOT



亚洲建筑及装饰联展系列  
**BUILD ASIA Mega Show**

**GET READY FOR YOUR VISIT TO THE SHOW**

### PLAN YOUR TRIP

- Book a hotel
- Translation Services

- Visa Info
- Easy Shanghai Guide  
Live Shanghai like a local. A guide from expats who have seen it all.

\*This badge allows for free entrance at the show for all the 3 days, from 26<sup>th</sup> to 28<sup>th</sup> of May.

Venue: National Exhibition and Convention Center (NECC)  
333 Songze Avenue, Qingpu District, Shanghai, China

**Opening hours:** May 26<sup>th</sup> 9:00-18:00  
May 27<sup>th</sup> 9:00-18:00  
May 28<sup>th</sup> 9:00-15:00



### Exhibitor List

Scout all the participating companies and the products they will bring at the show and schedule meetings in advance.

Tips:

- use the search filters separately
- the info displayed is as per the information inserted by each company autonomously



Organized by:



Build Your Dream Group





# These pages 3 INVENTION & RESEARCH PAPER OF PASTOR PAUL ELIYA

DATE 20/02/2025

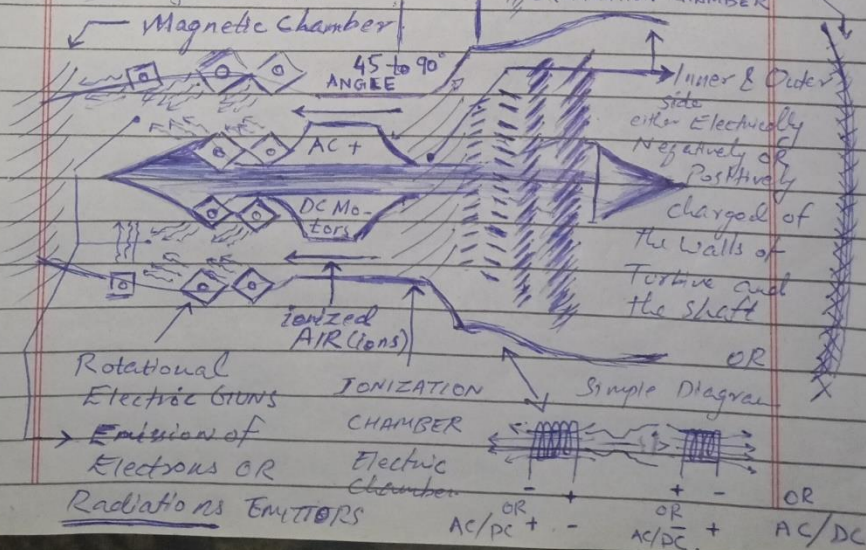
SOUL AT WORK

SOUL'S WORK

Wind Driven Plates and Much more (sides of fuselage and wings span flap)  
 Using Transformers & Magnets to EROD, ALKALINE LEAKING  
 Accelerate the process and Additional Edged Root Extension  
 Power to produce more Thrust. by Emitting  
 Hitting the Nucleus of Atoms to a Electron  
 certain limit to produce the (Desired Energies  
 Thrust) through High pitched Sound & Magnetic  
 LASER Beam. (Saving Energy Electrical Energy) to Reuse  
 Using Ionic Energy to Produce Thrust. to GAIN  
 The presence of Hydrogen & Oxygen More  
 in the atmosphere will be more ideal  
 situation to Boost Thrust.  $V = \lambda f$ ,  $V = IR$   
 $P = F/A$ ,  $\rho = m/\text{Volume}$ ,  $F = mg$  &  $E = mc^2$   
 The leading edged Root Extension is  
 linked to Electron Gun and a High  
 Pressure created beneath the wings will  
 be electrically charged and wings below  
 are already electrically charged will  
 create more PRESSURE for more LIFT.

$\equiv$  = Magnetic Chamber

$\equiv$  = IONIZATION CHAMBER



Thesis Page 2 INVENTION & RESEARCH PAPER OF PASTOR PAUL ELIYA  
SOUL AT WORK

DATE 20/02/2025 SOUL'S WORK

Here Magnetic field is Magnetic flux (AC+DC Motors)

In Magnetic field ions are attracted  
and nucleus of Atoms are repelled  
& Here Electrical field is Electric flux.

In Electrical field nucleus are attracted  
and ions of Atoms are repelled.

Both situation co-exist e.g. with the  
help of this Equation. (Computer Softwares  
updated with 24/7 Data and Strong HARDWARES)

(A) = Force of Repulsion between Nucleuses  
of Atoms & The Magnetic field flux.

(B) = Force of Repulsion between ions  
(electrons) & The Electrical field flux.

(C) = Force of Attraction between Nucleuses  
of Atoms and (B) Electrical field flux.

(D) = Force of Attraction between ions  
(electrons) & Magnetic field flux.

The Values of (A), (B), (C) & (D) changes

from  $N_1 \times 10^N$  to  $N_2 \times 10^N$

or simply  $\pm N_n \times 10^N$

Here  $N = \frac{+1}{\div} \frac{+2}{\div} \frac{+3}{\div} \frac{+4}{\div} \frac{+5}{\div} \dots \frac{+N_n}{\div}$

As Discussed earlier, The change in the  
value of Air pressure within an Area  
in the Engine, i.e. Density of Air both  
hot Air & cold Air.

Special Note # 2 (For more inventions Replace the signs  
with +, -, x &  $\div$  & Values of All Forces to study further cases.)



Thesis page 1 INVENTION & RESEARCH PAPER OF PASTOR PAUL ELIYA

DATE 20/02/2025 SOUL AT WORK  
SOUL'S WORK

## Sonic Thrust Engine / Nuclear Thrust Engine

- A1) IONIC Thrust / Ionization of Thrust / Electrical Thrust / Nuclear Thrust / Atomic Thrust / Magnetic Thrust / Simultaneous IONIC Nuclear Thrust
- A2) change in the value of Thrust & change in the Design of ION ENGINE and change in the weight or mass of the parts of ION ENGINE. Basically AIR is Electrically charged to produce more Thrust. (AC + DC Motors) Two Situations Using Rotating Electron GUNS at  $45^\circ$  Angle.

- 1) Fixed Plasma (Recycling Thrust) + Vacuum (Using Solar Energy to Recycle the gas from 1 cylinder + another is pumped and released to produce a push) or Thrust in Space or Vacuum. Plasma is stucked in a BOX Here.
- 2) Moveable Plasma (AIR) (AC + DC MOTORS)
- 3) Engine Turbines and shaft rods and blades are positively charged & negatively charged At the same time or at Different times.  
Special Note: The continuous change in Magnetic Flux produces Electric Current EMF

- 4) The AIR Molecules (atoms) will be ionized repelling each other in the Intake, compression and Exhaust chambers between Engine shaft & the wall of the Engine (Design is very Important paper Attached)

For creating More Thrust by passing Magnetic Flux & Electric Flux in AIR Atoms.

— The Electromagnetic Thrust —

opening ideas (covering letter).

Recommendations from PASTOR PAUL ELYA  
DATE: 20/02/2025 FOR BELOVED WORLD.

SOUL AT WORK (SOUL'S WORK).

Things Important to RUN The Beloved  
World through my website, below  
<https://istheonlywayjesusc.wixsite.com/captain-paul-elya>

1) IONIZATION OF THRUST

(<sup>to SIX</sup> Three papers Attached).

2) RECYCLING THRUST, (Three papers Attached)  
Parashoots (Multiple Parashoots ON JET FIGHTER)

3) Coded Assets at longitude and at  
latitude and at heights at GPS  
(GLOBAL INTELLIGENCE FOR GOOD)

4) People's intent, capabilities DNA, Accounts  
thoughts, Good Works, Occupations,  
profession, and All statuses, everything,  
Biometric & Face Recognition Software  
& Data Bases linked with Twice ID  
Information at Both Entry & Exit Detecting  
points, The Mindset, ideologies, Narratives  
and role models and Values of People.

5) Saving and Protecting moving and  
wired people things and places from  
their surrounding moving and wired  
people, things and places around  
them. The Standards for operating  
Procedures for Unconditionally Loving Humanity

6) Distribution of Wealth Resource & Services,  
According to the Fundamental Human  
Rights of the people and According to  
the Good Works of the people. Unconditionally,  
Increasing Agricultural Production & Awareness.

7) My Soul living with my Beloved ones is my Dreams

IN LOVE & GOODNESS WITH JESUS CHRIST.  
INCARNATED ALL ENERGY Along with my Belongings & Works.