



<https://istheonlywayjesusc.wixsite.com/love>

<https://youtube.com/shorts/DXvkYsst7zE?feature=shared>

<https://istheonlywayjesusc.wixsite.com/captain-paul-eliya>



FEDERAL GOVERNMENT EMPLOYEES HOUSING FOUNDATION
10-MAUVE AREA, G-10/4
ISLAMABAD

MEMBER'S DATA SHEET
MEMBERSHIP PHASE-2 (PART-V)
(JULY 2019-JUNE 2020)

BANK NO	CATEGORY	DATE OF SUBMISSION
85	II	13/01/20 Rs. 50000/-
NAME OF APPLICANT		
HASSAN SYED		
PAY SCALE		
19		
CNIC		
3740532937525		
PARENT OFFICE		
NATIONAL TRANSPORT RESEARCH CENTRE		
QUOTA		
NR		
DATE BIRTH		
18/09/58		

Note: Particulars of individuals may contain errors. If so, please send us your detailed particulars (name, CNIC, Date of birth, Date of Submission, Category), through mail to Director (estate), Federal Government Employees, Housing Foundation, 10-Mauve Area, Islamabad. Seniority No shall be announced later. Please use computer Generated No with your Email as a reference.

05/01/25

Thc
#14

BALANCING ACCOUNTS OF ALL ENERGIES

Both Automatic & OFFline Flight Modes
DATE: 20/02/2019

DATE: 20/02/2025 8

(physical controls) & INTERCEPTION

Alignment Meters, Scales, Displays, ^{INTELLIGENCE} SURVEILLANCE ^{SIGNALS}

(Higher) Forces and Energies, Pressures and Potentials
both Attracts & Repells and Overcomes lower /

(Lower) Forces and Energies, Pressures and Potentials

Power and Air. (Everything is linked with Coding) of Assets

Protecting INTERNAL CIRCUITS OF COCKPITS WITH MORE OPTIONS (SURPLUS POWER RESOURCES)

To Regain Power) to overcome every problem

Multiple Target Locking & MULTIPLE RADARS (IRON DOME)
and Dividing Senses

and Dividing Sky + Space into ALIEN-co-ordinates, Multiple LASERS (Quasars, Gamma Rays, etc.)

LASERS, GUNS, CAMERAS, HEAT & RADIATION DETECTION

SENSORS, SMOKE, CLOUD, AIR Temp, & Pressure SENSORS

MOTION SENSORS & DETECTORS (WITH INVERTED MISSILES & M16)

GUNS & LASER 360° Horizontal & 360° Vertical)

Moveable Cockpit Seat of the pilot to cancel the effects of G-Forces (Moveable Rotateable Seats)

with Internal Strong hydraulics, magnets connected

with Unlike poles to reduce weight of internal

Components (negatively & positively charged) & close to 1:1 ratio

charging of (A) Flappers, (B) Alerons (C) spoiler
(D) B. H. (E) F.

(Air Brake), (D) Rudder, (E) Elevators, (F) Leading
Edge of Rudder - Forward of the Main Cabin

Edged Root EXTENSION (G) Fuselage, (H) Wing spans
For Best MANEUVERING 1.5 FT TAIL

FOR BEST MANEUVERING LIFT, TORQUE, AIR BREAKS,
ROLLING CLOSING & ANTI CLOSING & TAIL

ROLLING CLOCKWISE & ANTI-CLOCKWISE, PITCHING UP & DOWN, YAWING RIGHT & LEFT. 200 parachutes

Angle of Attacks

Altitude

Knotical Speed (V) (Fixed or Moving Targets Locations
position changing Longitudes & Latitudes)

RPMS (Revolutions per minute) Turbine speed. \rightarrow In AIR & SPACE

NAVIGATIONS (Longitude & Latitude) Flight Data

Locations (Satellite + LASER + GPS Guided)

Aircraft Positioning & CAPSULE EJECTION (Downward & Upward)

... (Spward) ...

These pages 3 INVENTION & RESEARCH PAPER OF PASTOR PAUL ELIYA

DATE 20/02/2025

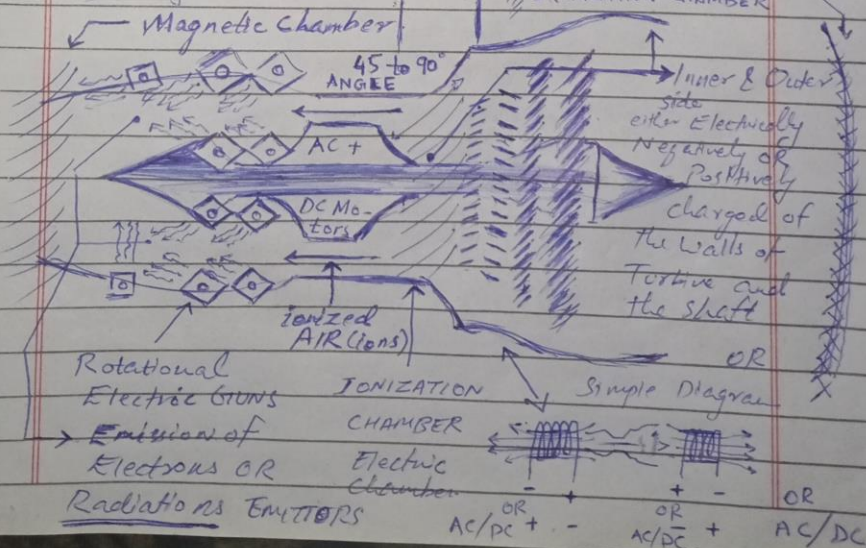
SOUL AT WORK

SOUL'S WORK

Wind Driven Plates and Much more (sides of fuselage and wing span flap)
 Using Transformers & Magnets to EROD, ALTERNATING
 Accelerate the process and Additional Edged Root Extension
 Power to produce more Thrust. by Emitting
 Hitting the Nucleus of Atoms to a Electron
 certain limit to produce the (Desired Energies
 Thrust) through High pitched Sound & Magnetic
 LASER Beam. (Saving Energy Electrical Energy) to Reuse
 Using IONIC ENERGY TO Produce Thrust. to GAIN
 The presence of Hydrogen & Oxygen More
 in the atmosphere will be more ideal
 situation to Boost Thrust. $V = \lambda f$, $V = IR$
 $P = F/A$, $\rho = m/\text{Volume}$, $F = mg$ & $E = mc^2$
 The leading edged Root Extension is
 linked to Electron Gun and a High
 Pressure created beneath the wings will
 be electrically charged and wings below
 are already electrically charged will
 create more PRESSURE for more LIFT.

⚡ = Magnetic Chamber

⚡ = IONIZATION CHAMBER



Thesis Page 2 INVENTION & RESEARCH PAPER OF PASTOR PAUL ELIAH
SOUL AT WORK

DATE 20/02/2025 SOUL'S WORK

Here Magnetic field is Magnetic flux (AC+DC Motors)

In Magnetic field ions are attracted
and nucleus of Atoms are repelled
& Here Electrical field is Electric flux.

In Electrical field nucleus are attracted
and ions of Atoms are repelled.

Both situation Co-exist e.g. with the
help of this Equation. (Computer Softwares
updated with 24/7 Data and Strong HARDWARES)

(A) = Force of Repulsion between Nucleuses
of Atoms & The Magnetic field flux.

(B) = Force of Repulsion between ions
(electrons) & The Electrical field flux.

(C) = Force of Attraction between Nucleuses
of Atoms and (B) Electrical field flux.

(D) = Force of Attraction between ions
(electrons) & Magnetic field flux.

The Values of (A), (B), (C) & (D) changes
from $N_1 \times 10^N$ to $N_2 \times 10^N$
or simply $\pm N_n \times 10^N$

$$\text{Here } N = \frac{+1 \times +2 \times +3 \times +4 \times +5}{\div \div \div \div \div} \times N_n$$

As Discussed earlier, The change in the
value of Air pressure with in an Area
in The Engine, i.e. Density of Air both
hot Air & cold Air.

Special Note # 2 (For more inventions Replace the signs
with +, -, x & \div & Values of All Forces to Study further cases.)

Thesis page 1 INVENTION & RESEARCH PAPER OF PASTOR PAUL ELIYA

DATE 20/02/2025 SOUL AT WORK
SOUL'S WORK

Sonic Thrust Engine / Nuclear Thrust Engine

- A1) IONIC Thrust / Ionization of Thrust / Electrical Thrust / Nuclear Thrust / Atomic Thrust / Magnetic Thrust / Simultaneous IONIC NUCLEAR Thrust
- A2) change in the value of Thrust & change in the Design of ION ENGINE and change in the weight or mass of the parts of ION ENGINE. Basically AIR is Electrically charged to produce more Thrust. (AC + DC Motors) Two Situations Using Rotating Electron GUNS at 45° Angle.
- 1) Fixed Plasma (Recycling Thrust) + Vacuum (Using Solar Energy to Recycle the gas from 1 cylinder to another is pumped and released to produce a push) or Thrust in Space or Vacuum. Plasma is stucked in a BOX Here.
 - 2) Moveable Plasma (AIR) (AC + DC MOTORS)
 - 3) Engine Turbines and shaft rods and blades are positively charged & negatively charged At the same time or at Different times.
Special Note: The continuous change in Magnetic Flux produces Electric Current EMF
 - 4) The AIR Molecules (atoms) will be ionized repelling each other in the Intake, compression and Exhaust chambers between Engine shaft & the wall of the Engine (Design is very Important paper Attached)
For creating More Thrust by passing Magnetic Flux & Electric Flux in AIR Atoms.
— The Electromagnetic Thrust —

opening ideas (covering letter).

Recommendations from PASTOR PAUL ELYA
DATE: 20/02/2025 FOR BELOVED WORLD.

SOUL AT WORK (SOUL'S WORK).

Things Important to RUN The Beloved
World through my website, below
<https://istheonlywayjesusc.wixsite.com/captain-paul-elya>

2) IONIZATION OF THRUST

(^{to SIX} Three papers Attached).

2) RECYCLING THRUST, (Three papers Attached)
Parashoots (Multiple Parashoots ON JET FIGHTER)

3) Coded Assets at longitude and at
latitude and at heights at GPS
(GLOBAL INTELLIGENCE FOR GOOD)

4) People's intent, capabilities DNA, Accounts
thoughts, Good Works, Occupations,
profession, and All statuses, everything,
Biometric & Face Recognition Software
& Data Bases linked with Twice ID
Information at Both Entry & Exit Detecting
points. The Mindset, ideologies, Narratives
and role models and Values of People.

5) Saving and Protecting moving and
wired people things and places from
their surrounding moving and wired
people, things and places around
them. The Standards for operating
Procedures for Unconditionally loving humanity

6) Distribution of Wealth Resource & Services.

According to the Fundamental Human
Rights of the people and According to
the Good Works of the people. Unconditionally,
Increasing Agricultural Production & Awareness.

7) My Soul living with my Beloved ones is my Dreams

IN LOVE & GOODNESS WITH JESUS CHRIST.
INCARNATED ALL ENERGY Along with my Belongings & Works.